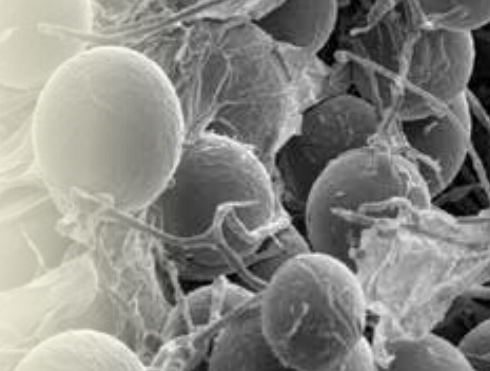


BioPlex   
Easy Spread BASIC BioCHAR  
Landscape, Nursery, Grower &  
Golf Course

Premium Greens Grade Homogeneous GRANULES



**Homogeneous Bonded Uni-Particle Technology**  
Easy Spread Particle, 73% CARBON + SEAWEED + COMPOST Soil Amendment



**Benefits:**

- Contains BioHabitat
- Increases Moisture Retention
- Contains Food for Soil
- Increases Soil Porosity
- Increases Air-Water Infiltration
- Builds Soil Structure

**Applications:**

- New Landscape Bed Construction
- Ornamental Installations
- Green, Tee & Fairway Topdressing
- Vertical Mulching
- Potting Soil Amendment
- Clay Soil Amendment

**PACKAGE SIZE:**  
40 lb Box

**Product Description:**

**BioPlex Easy Spread BASIC BioCHAR** (73% BioCHAR + 2% Seaweed + 25% Compost) contains high levels of CARBON and Oxygen, arguably the most valuable of all soil conditioners. BioCHAR is a most valuable and versatile organic soil conditioner and plays a fundamental supporting role in the neutralization of soluble salts and pesticide residues. It is remarkably stable and very porous, it provides a sustainable foundation for bio-habitats and persists a long time in the soil resulting in increased hydration and adsorption capacity in amended soils. **BioPlex Easy Spread BASIC BioCHAR** fills a unique role in porous soil matrix (bio-habitat) by facilitating the long-term retention of moisture, nutrients and Plant-Growth-Inducing-Rhizobacteria (PGIR). All are required and necessary to sustain optimal plant and soil health as well as neutralizing existing or future soluble salt residues as a result of over application of fertilizers and/or ice-melters utilized annually in both commercial and residential landscape settings.

The general advice in the biochar community is that sustainable healthy, pro-biotic soil habitat will contain 10% BioChar by volume. Use **BioPlex Easy Spread BASIC BioCHAR** in the general soil area surrounding the root zone, and when possible, below the roots of your vegetables, flowers, grass, trees or shrubs. Your ultimate 10% target doesn't all have to incorporate into the soil all at once. When you add **BioPlex Easy Spread BASIC BioCHAR** to an area and mix it into the soil, it isn't going away any time soon. Those subsequent modifications to the root zone will continue to persist for many years to come. You can quantify your ultimate 10% by volume target by aggregating cumulative application volumes over two or more seasons.

Whether your primary objectives are related to nursery or greenhouse growing, turf maintenance, ornamental plant installations or sports turf, soils amended with **BioPlex Easy Spread BASIC BioCHAR** will outperform standard unamended soils in every area of critical review for many years to come.

Sustainable "peace of mind" means that your turf and ornamentals have a balanced physical bio-habitat necessary for optimized plant and soil health for many, many years to come.

**Plant Health <sup>dur</sup> Sustainable BIOLOGY™**

**Formulation and Active Ingredient Profile**

**NON PLANT FOOD INGREDIENT(S):**

<b>Aerobically Cured Organic Compost:</b> .....	<b>25%</b>
<b>Ascophyllum nodosum Seaweed:</b> .....	<b>2%</b>
<b>BioChar (Carbon 88%):</b> .....	<b>73%</b>

*Derived from Aerobically Composted Poultry Litter, BioChar Carbon Aggregate, Ascophyllum nodosum Seaweed*

Particle Type: Homogeneous Formulation  
Particle Size: 1.0 - 1.5 mm | 100 SGN